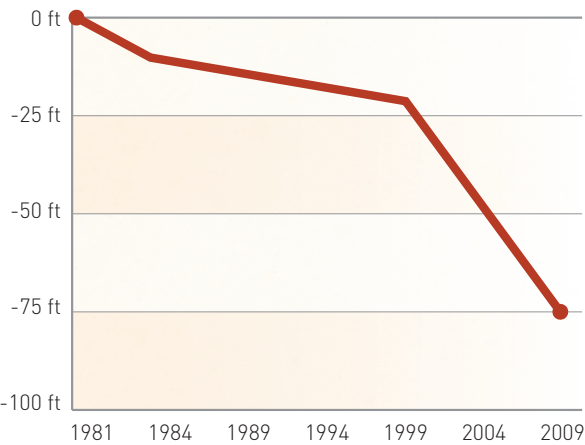


# Cumulative Change in Groundwater Level Since 1981



Source: Paso Robles Groundwater Basin Management Plan, Estrella Area Composite Well Hydrograph

## Looking Ahead Management Plan and Solutions

The Plan recommends both short and long term actions by the basin’s stakeholders:

- Increase water use efficiency in all water use sectors (agriculture, rural residential, municipal, commercial) to reduce groundwater demand.
- Develop supplemental water supplies, such as Lake Nacimiento water, recycled water and State Water Project water.
- Increase stakeholders’ knowledge and understanding of the groundwater basin through education and additional data collection.



View the full Management Plan at:  
[www.prcity.com/government/departments/publicworks/water/groundwater.asp](http://www.prcity.com/government/departments/publicworks/water/groundwater.asp)

Paso Robles Groundwater Basin  
Management Plan Steering Committee

976 Osos Street, Room 200  
San Luis Obispo, CA 93408

# THE PASO ROBLES GROUNDWATER BASIN MANAGEMENT PLAN

Water Users Voluntarily Working Together  
to Protect the Long Term Sustainability of  
North County’s Water Resources



A publication developed by the Paso Robles  
Groundwater Basin Management Plan Steering Committee

Photo: GardenSoft

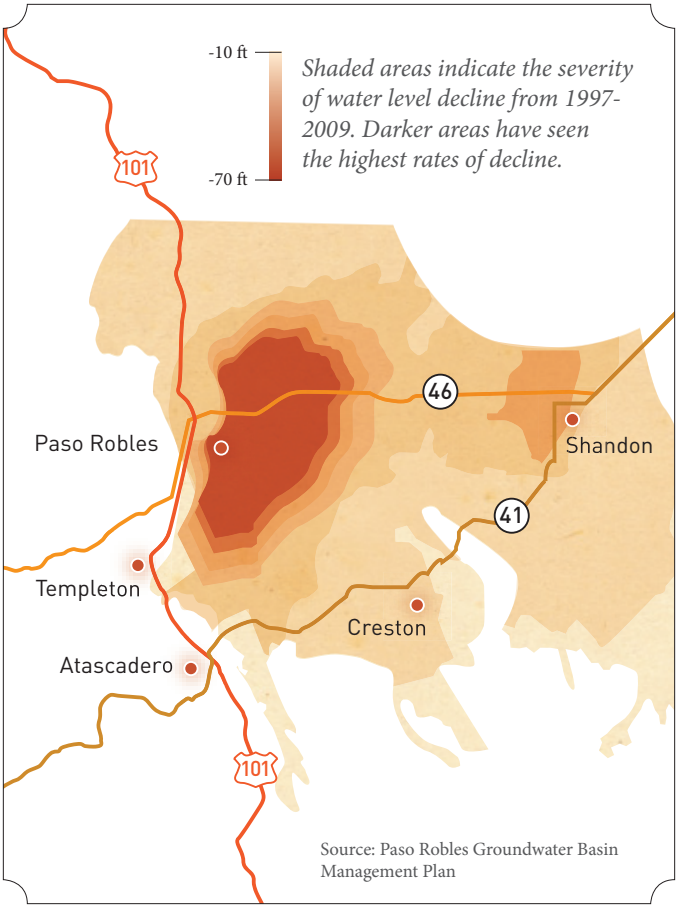
# THE PASO ROBLES GROUNDWATER BASIN

## Our Shared and Finite Resource

According to multiple studies of the basin, as discussed in the Plan, annual basin pumping is now at or near the basin’s perennial yield. In addition, from 1997–2009, water levels declined on average of 2–6 feet per year, depending on the location.

In 2011, the basin’s water users developed a Management Plan to assess the groundwater basin’s status and identify actions to protect this extremely valuable resource.

## Declining Groundwater Levels







# Landscape

Photo: GardenSoft



# Agriculture



# Private Wells

*“Collective action by all users to reduce water use can have a meaningful impact in stabilizing water level declines and protecting the long term sustainability of the basin.”*

## Checklist for Landscape Water Users

- Do you maintain your irrigation system to ensure uniform water distribution? Check the system regularly and fix leaks, broken and clogged heads, overspray problems, and sunken or tilted heads.
- Do you water no more than 3 days per week in summer and 2 days per week in spring and fall, and reset your timer at least 4 times per year with the seasons?
- Do you water in the early morning before 9 am when winds and temperatures are lowest?
- Do you avoid runoff on sloping areas by using multiple, shorter run times?
- Do you maintain turf height at 3-4”? Longer turf uses significantly less water.
- Do you apply an appropriate fertilizer regularly? If the soil lacks nutrients, more water won't help.
- Do you check drip systems regularly for leaks, clogged and missing drip emitters?

## Checklist for Agricultural Water Users

- Do you schedule your irrigations based on what the plants need using soil, plant, or weather monitoring tools? Do you track seasonal rainfall at your site?
- Do you know how many gallons of water it takes to saturate the targeted root zone for your crop?
- Do you know the application rate of your irrigation system?
- Do you monitor your irrigation set times to avoid water traveling beyond the root zone?
- Have you evaluated your irrigation system's distribution uniformity?
- Have you made corrections to maximize the uniformity of irrigation applications?
- Do you regularly clean and maintain your irrigation and filtration system to protect the uniformity of your system?

## Checklist for Private Well Owners

*Tracking water levels in your well will enable you to make informed decisions regarding your well and water supply.*

- Do you know the current water level in your well and where your well pump is set?
- Do you know the total depth of your well and where it is screened?
- Do you have a method of measuring the water level, like a sounding tube or air line?
- Have you considered monitoring the water level in your well?
- Have you enlisted the assistance of local drilling companies to aid you in monitoring your water level?

## Join Us Each Month

A Steering Committee has been formed that will coordinate with stakeholders to implement the Groundwater Management Plan to ensure the health of the basin.

This committee meets monthly and their meetings are open to the public.



For more info, please contact:  
[pasobasincommittee@gmail.com](mailto:pasobasincommittee@gmail.com)

## Learn More About Water Conservation

There are a variety of educational materials, workshops, and resources available through the following local organizations:

### ***Atascadero Mutual Water Company***

[www.amwc.us](http://www.amwc.us)  
805-466-2428

### ***Central Coast Vineyard Team***

[www.vineyardteam.org](http://www.vineyardteam.org)  
805-369-2288

### ***City of Paso Robles***

[www.pasowater.com](http://www.pasowater.com)  
805-227-7250

### ***Paso Robles Wine Country Alliance***

[www.pasowine.com](http://www.pasowine.com)  
805-239-8463

### ***San Luis Obispo County Farm Bureau***

[www.slofarmbureau.org](http://www.slofarmbureau.org)  
805-543-3654

### ***Univ. of California Cooperative Extension***

[www.cesanluisobispo.ucdavis.edu](http://www.cesanluisobispo.ucdavis.edu)  
805-781-5940

### ***US-LT Resource Conservation District***

[www.us-ltrcd.org](http://www.us-ltrcd.org)  
805-434-0396

## Making the switch from turf to a Central Coast Waterwise Landscape is easy.



With our hot-dry summers, more people in the North County and across the Central Coast are reducing high-water-use lawn areas in favor of California natives and plants from the world's other "Mediterranean" climate regions.



Using flowering, drought-tolerant shrubs, perennials, annuals and trees, you can create a vibrant landscape that provides color and interest year-round, with a fraction of the annual maintenance and water use of turf.

## Design your own landscape.



For more information on design and establishing drought-tolerant landscapes, please visit:  
SLO County Water Wise Landscaping  
[www.slowaterwiselandscaping.com](http://www.slowaterwiselandscaping.com)